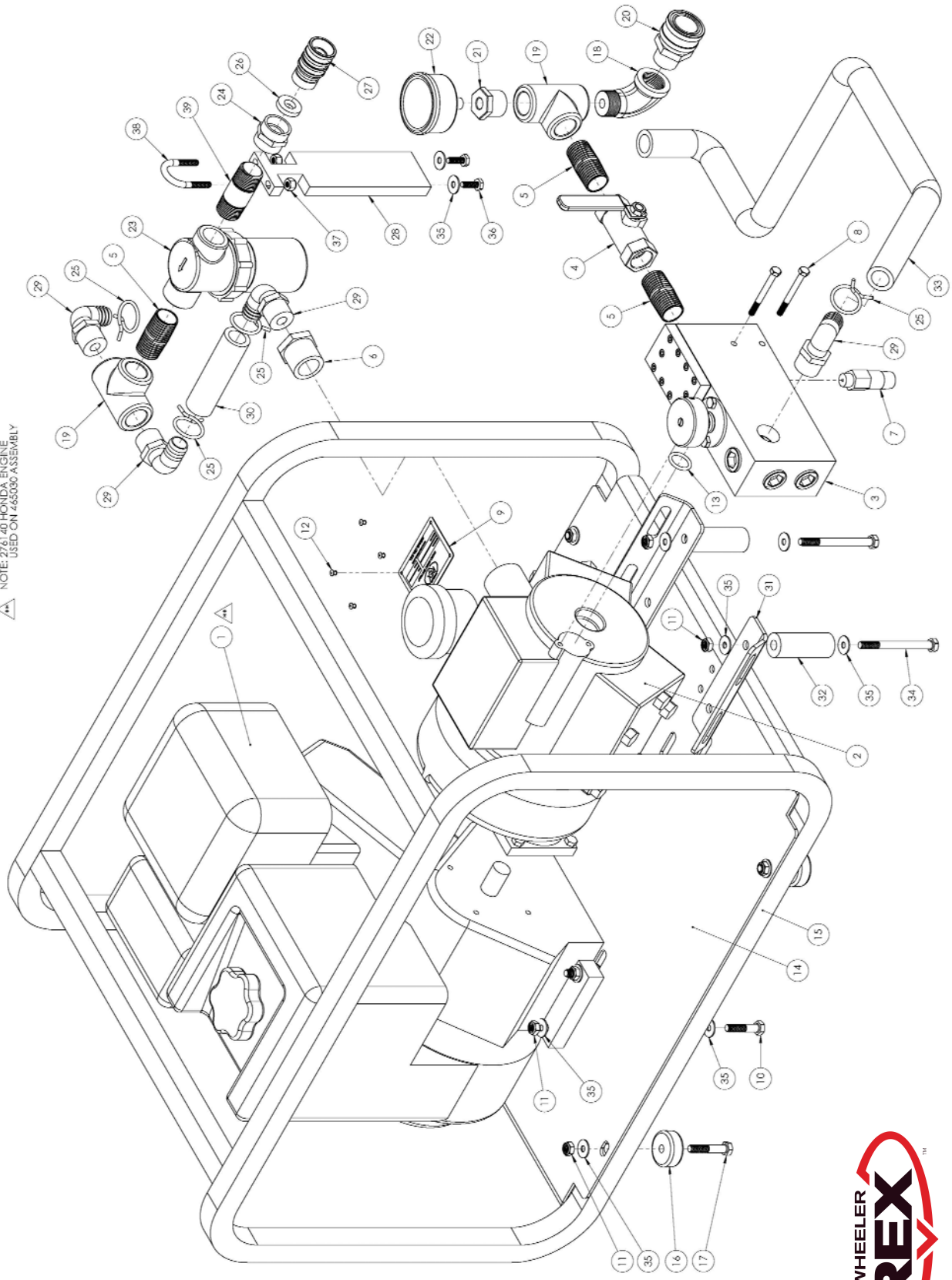


46501 Parts

▲ USE PART # 276140 (HONDA ENGINE) FOR PUMP ASSY

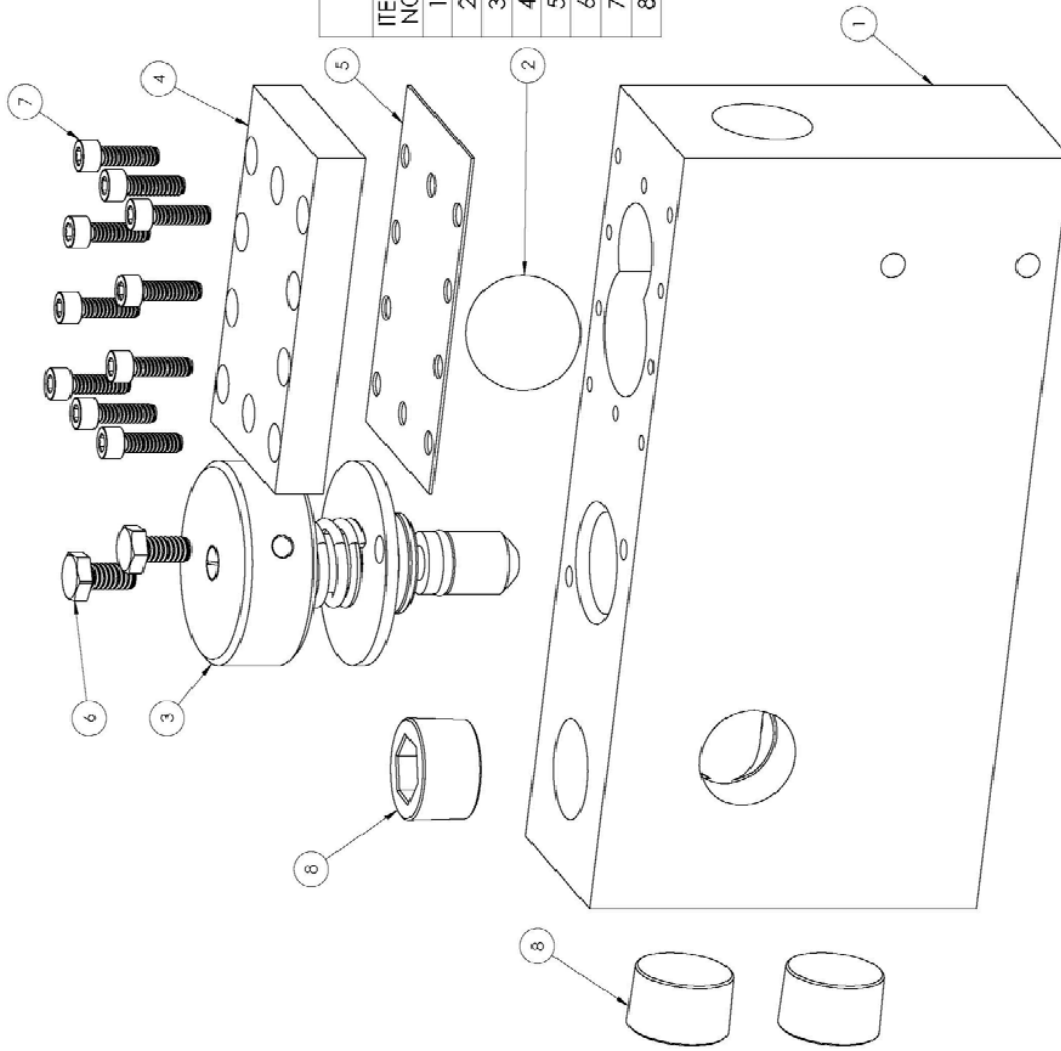
Item	Part No	Description	Qty
1	700136	PUMP CART	1
2	275684	6.5 HP BRIGGS & STRATTON ENGINE	1
3	276908	KAPPA 43 TIPPLE DIAPHRAM PUMP	1
4	700896	MANIFOLD ASSEMBLY	1
5	276116	3/4 MP x 3/4 MH 90 DEG HOSE BARB	2
6	275927	3/4" BALL VALVE	1
7	36359	0-600 PSI GAUGE	1
8	275644	3/4" TEE	2
9	275932	STRAINER, HYPRO 3350-0040P	1
10	276102	3/4" BRASS CLOSE NIPPLE	5
11	276100	PH QD FEM HLF BST-6M	1
12	276103	1" x 3/4" HEX REDUCER BUSHING	1
13	275950	SAFETY VALVE, CAT 30960	1
14	276108	3/4" x 1/4" BRASS REDUCER BUSHING	1
15	275874	3/4" FH x 3/4" FP ADAPTER	1
16	275941	HOSE WASHER	1
17	276099	3/4" HOSE QUICK DISCONNECT	1
18	276109	M6 x 60MM HEX HEAD CAP SCREW	2
19	276105	HOSE CLAMP, 1 1/8" OD RC HC-18S	2
20	701126	BY-PASS HOSE	1
21	220874	NAME PLATE	1
22	275638	5/16 x 1 1/2" HEX HEAD CAP SCREW	4
23	275685	5/16" FLAT WASHER	4
24	275857	5/16-18 HEX NYLON INSERT LOCKNUTS	4
25	275543	POP RIVET, STAR 4-2AAD	4
26	34550	INTAKE HOSE	1
27	276111	O-RING	1
28	221065	HOSE ASSEMBLY, 1000 PSI	1

▲ NOTE: 27.6 L 40 HONDA ENGINE
USED ON 465030 ASSEMBLY



46503 Parts

Item	Part No	Description	46503 / 465030Parts	Qty
1	275684	6.5 HP BRIGGS & STRATTON ENGINE 276140 HONDA ENGINE		1
2	276908	KAPPA 43 TIPPLE DIAPHRAM PUMP		1
3	700896	MANIFOLD ASSEMBLY		1
4	275927	3/4" BALL VALVE		1
5	276102	3/4" BRASS CLOSE NIPPLE		3
6	276103	1" x 3/4" HEX REDUCER BUSHING		1
7	275950	SAFETY VALVE, CAT 30960		1
8	276109	M6 x 60MM HEX HEAD CAP SCREW		2
9	220874	NAME PLATE		1
10	275638	5/16 x 1 1/2" HEX HEAD CAP SCREW		4
11	275857	5/16-18 HEX NYLON INSERT LOCKNUTS		10
12	275543	POP RIVET, STAR 4-2AAD		4
13	276111	O-RING		1
14	701548	BASE PLATE (COMET)		1
15	701549	ROLL CAGE (XL)		1
16	276443	RUBBER FOOT		4
17	275639	5/16-18 x 1 3/4" HHCS		4
18	275643	3/4" STREET ELBOW		1
19	275644	3/4" TEE		2
20	276100	PH QD FEM HLF BST-6M		1
21	276108	3/4" x 1/4" BRASS REDUCER BUSHING		1
22	36359	0-600 PSI GAUGE		1
23	275932	STRAINER, HYPRO 3350-0040P		1
24	275874	3/4" FH x 3/4" FP ADAPTER		1
25	276105	HOSE CLAMP, 1 1/8" OD RC HC-18S		4
26	275941	HOSE WASHER		1
27	276099	3/4" HOSE QUICK DISCONNECT		1
28	701544	INLET BRACE		1
29	276116	3/4 MP x 3/4 MH 90 DEG HOSE BARB		4
30	701551	INLET CONNECTION HOSE		1
31	701516	PUMP BRACKET		2
32	701545	PUMP BRACE (UDOR)		2
33	701550	BY PASS HOSE		1
34	277059	5/16-18 x 3 1/2" HHCS		2
35	276540	1/4" FLAT WASHER		18
36	560081	1/4-20 x 3/4" HHCS		2
37	275426	1/4-20 ESNA STOP NUT		2
38	277262	U-BOLT - 1/4" x 1" x 1 3/4"		1
39	277322	3/4" x 2 1/2" LONG BRASS NIPPLE		1
40	277181	WARNING TAG ***NOT SHOWN**		1
41	34550	SUCTION HOSE ASSEMBLY ***NOT SHOWN***		1
42	221065	PRESSURE HOSE ***NOT SHOWN***		1



700896 MANIFOLD ASSEMBLY			
ITEM NO.	PART NUMBER	DESCRIPTION	QTY.
1	700895	MANIFOLD	1
2	276098	1 1/8" SS BALL	1
3	700887	SPOOL ASSEMBLY	1
4	700124	MANIFOLD LID	1
5	700232	GASKET	1
6	276536	1/4"-20 x 1/2 SS HEX HEAD CAP SCREW	2
7	275070	#10-24 x 5/8" SHCS	10
8	276406	3/4" NPT PIPE PLUG	3



700896 Manifold Assembly Parts

Notes.....



Wheeler Rex ▪ 3744 Jefferson Road ▪ Ashtabula, Ohio 44005
Tel: 800-321-7950 or 440-998-2788 ▪ Fax: 440-992-2925
wheeler@wheelerrex.com ▪ www.wheelerrex.com